

Contact: Diane Ordille
Mount Laurel
Municipal Utilities Authority
1201 S Church Street
Mount Laurel, NJ 08054
856-234-0062 x125

Mount Laurel
Municipal Utilities Authority

Press Release

Issued-March 6, 2018

Mount Laurel Municipal Utilities Authority Completes Upgrades on Two More Sanitary Sewer Pump Stations

The Mount Laurel Municipal Utilities Authority (MUA) recently announced that rehabilitation of two more of their 41 sanitary sewer pumping stations, is complete. This project is a continuation of the MUA's program to upgrade the sanitary sewer pump stations throughout the Township. Pam Carolan, Executive Director explained, due to the age of these two pumping stations, rehabilitation was necessary to prevent failures that would disrupt operations. One of these pump stations provides service to a largely commercial area in the vicinity of Fellowship Road and the other to the NJ Turnpike Rest Area.

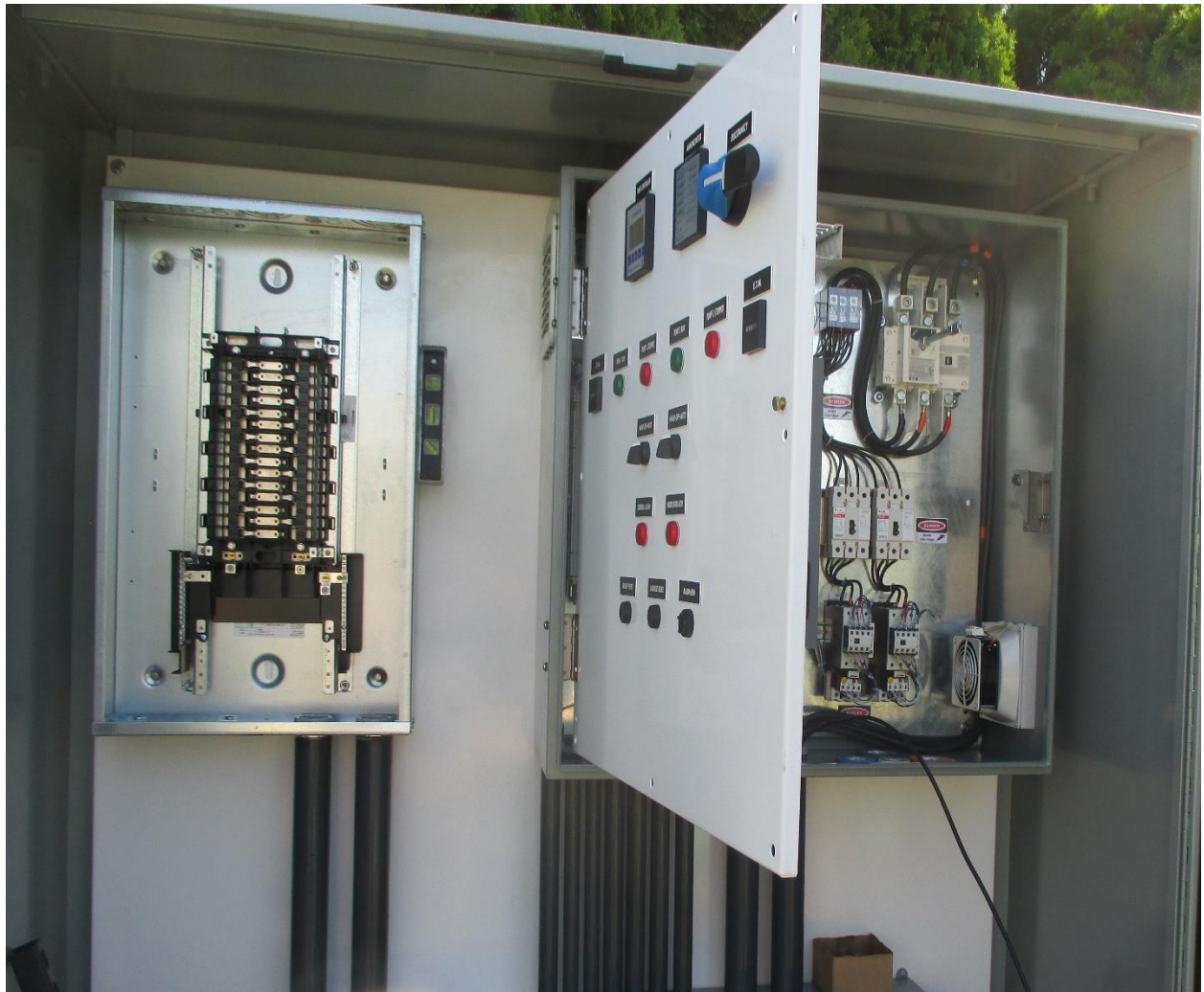
East Park Pumping Station was originally constructed in 1976 and the Turnpike Station in 1989. Both facilities received upgrades to their electrical and control systems. New aesthetically pleasing fencing was also installed at the East Park facility. The almost \$300,000 project was designed by the Alaimo Group of Mount Holly then publicly bid in January 2017 and awarded to MJF Electrical Contracting, Inc. of Treose, Pennsylvania in February 2017. The MUA provided funding for this project by utilizing its Capital Improvement Program.

MUA Board Chairperson, Cheryl CoCo-Capri stated, "We utilize our asset management program to assess our facilities, estimate remaining useful life and then work diligently to repair and/or replace our equipment before failure, while working within our existing financial framework."

Photos attached

###

Control panel at East Park Pump Station



New conduit at Turnpike Pump Station

